



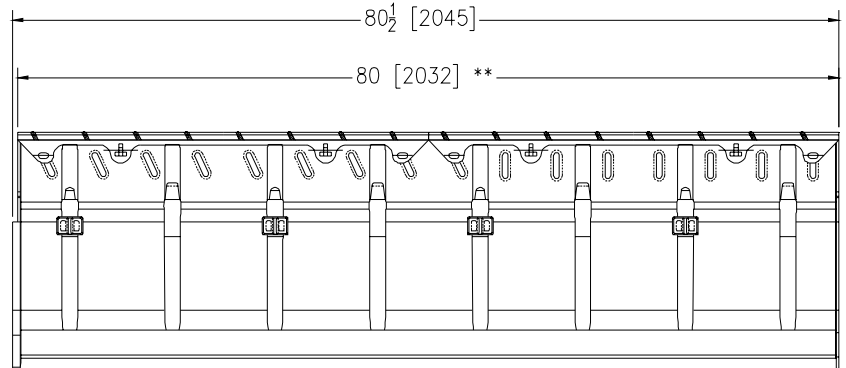
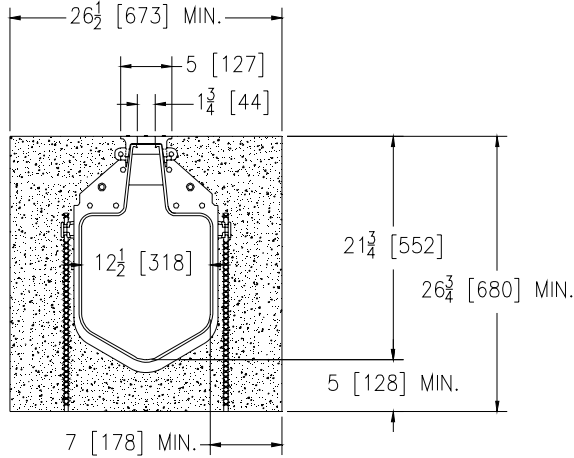
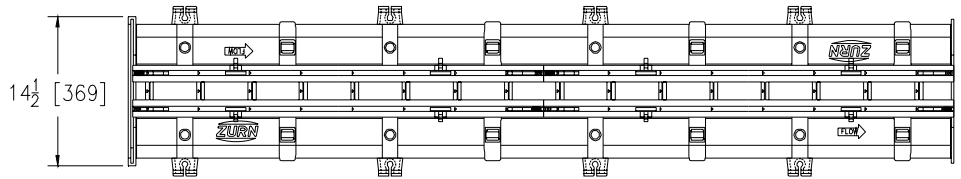
# Z888-18-HD

SPECIFICATION SHEET

## HI-CAP SLOTTED DRAINAGE SYSTEM WITH HEAVY-DUTY FRAME FOR 18 [457] CORRUGATED PIPE OR EQUIVALENT TAG \_\_\_\_\_

Dimensional Data (inches and [ mm ]) are Subject to Manufacturing Tolerances and Change Without Notice

Specifying engineer is responsible for concrete encasement and reinforcing based upon application and local codes.



\*\* 80 1/2 [2045] LENGTH INCLUDES MALE/FEMALE JOINT OVERLAP

**ENGINEERING SPECIFICATION:** Zurn Z888-18-HD Slotted Drain channel is 80 [2032] long, 21.75 [552] deep invert, 12.5 [318] wide with a 1.75 [44] throat width, made from LLDPE linear Low Density Polyethylene. Channels have a mechanical tongue and groove and bolted connection, mechanically lock into the concrete surround every 5 [127] along its length, channels weigh 7.5 lbs. per foot [11.2 kg per meter]. Channel has a smooth 2.5 [64] radius bottom with a smooth .011 Manning's coefficient, and neutral non-sloping body. Top reveal is non removable and is the finish at the surface, System is anchored into the concrete with Rebar clips or physical anchors every 5 [127] to 10 [254] along the channel body. Integral Rebar Clips are standard. The Channel has a non-removable ductile Iron Frame/Grate conforming to ASTM A536-84, Grade 80-55-06. Minimum 2000 psi concrete encasement shall include longitudinal #4 0.5 [13] rebar along chairs on either side of the trench neck. System is capable of Supporting Class C Loading per DIN EN1433 Top Load Classification.

### PREFIX OPTIONS

\_\_\_ Z 80 [2032] linear low density polyethylene modular drain channel with integral top frame.\*

### FRAME OPTIONS

\_\_\_ -HDG Galvanized Ductile Iron Frame with Slot  
\_\_\_ -DYN Reinforcing Schedule for Higher Loading

### SUFFIX OPTIONS

\_\_\_ -E1 End Cap  
\_\_\_ -E8 8 [203] No Hub End Outlet  
\_\_\_ -E12 12 [305] No Hub End Outlet  
\_\_\_ -E18 18 [457] No Hub End Outlet  
\_\_\_ -E24 24 [610] No Hub End Outlet  
\_\_\_ -T12/18 Transition from -12 to -18 [305-457]  
\_\_\_ -T18/12 Transition from -18 to -12 [457-610]  
\_\_\_ -T18/36 Transition from -18 to -36 [457-914]

Supplied By:



877-903-7246

www.trenchdrainsupply.com

|                |                        |                 |
|----------------|------------------------|-----------------|
| REV. A         | DATE: 08/31/10         | C.N. NO. 111634 |
| DWG. NO. 64001 | PRODUCT NO. Z888-18-HD |                 |

\*Regularly Furnished Unless Otherwise Specified

ZURN INDUSTRIES, LLC. ♦ SPECIFICATION DRAINAGE OPERATION ♦ 1801 Pittsburgh Ave. ♦ Erie, PA 16514

Phone: 814/455-0921 ♦ Fax: 814/454-7929 ♦ World Wide Web: www.zurn.com

In Canada: ZURN INDUSTRIES LIMITED ♦ 3544 Nashua Drive ♦ Mississauga, Ontario L4V1L2 ♦ Phone: 905/405-8272 Fax: 905/405-1292